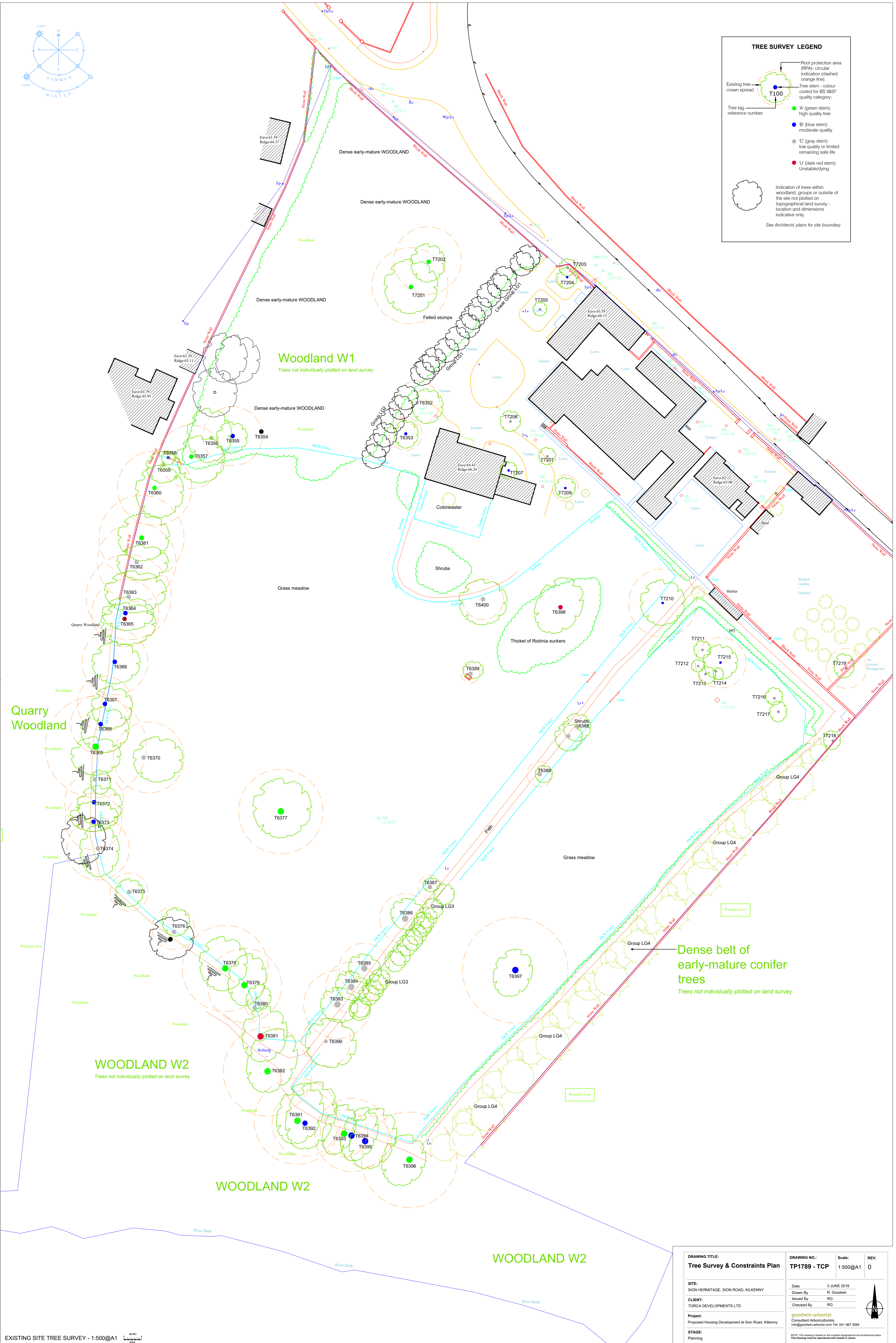


**TREE SURVEY LEGEND**

- Root protection area (RPA): circular indication (dashed orange line).
- Tree stem - colour coded for BS 2837 quality category:
  - W (green stem): high quality tree
  - B (blue stem): moderate quality
  - C (gray stem): low quality or limited remaining safe life
  - U (dark red stem): Unstable/dying
- Existing tree crown spread: T100
- Tree tag reference number
- Indication of trees within woodland, groups or outside of the site not plotted on topographical land survey - location and dimensions indicative only.
- See Architects' plans for site boundary



<b>DRAWING TITLE:</b> Tree Survey & Constraints Plan	<b>DRAWING NO.:</b> TP1789 - TCP	<b>Scale:</b> 1:500@A1	<b>REV:</b> 0
<b>SITE:</b> SION HERMITAGE, SION ROAD, KILKENNY	<b>Client:</b> TORCA DEVELOPMENTS LTD	<b>Date:</b> 3 JUNE 2019	
<b>Drawn By:</b> R. Goodwin	<b>Checked By:</b> RG	<b>Issued By:</b> RG	
<b>Project:</b> Proposed Housing Development at Sion Road, Kilkenny			
<b>STAGE:</b> Planning			
<b>goodwin-arborist</b> Consultant Arboriculturists info@goodwin-arborist.com Tel: 041 987 3584			

\*NOTE: This drawing is based on the supplied topographical and architectural plans. The drawings shall be the responsibility of the client.